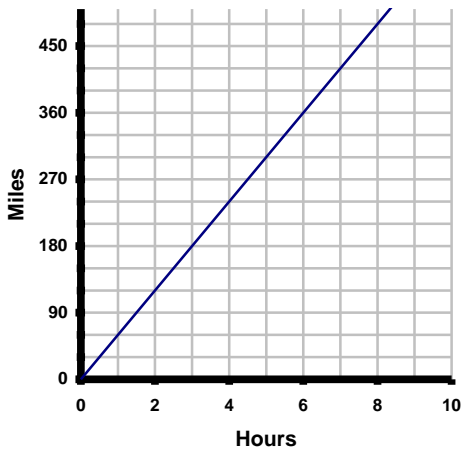


INTERPRETING GRAPHS #2

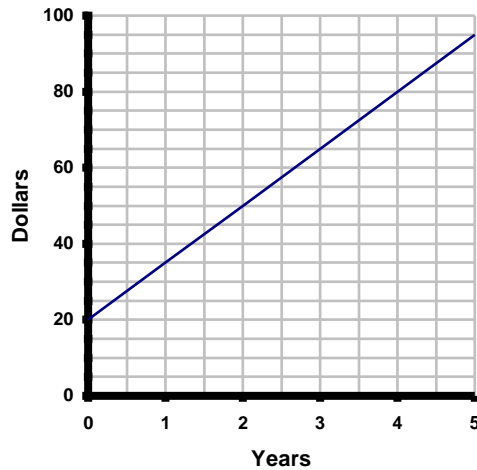
Directions: Circle the letter(s) of each correct statement. There may be more than one true statement.

1)



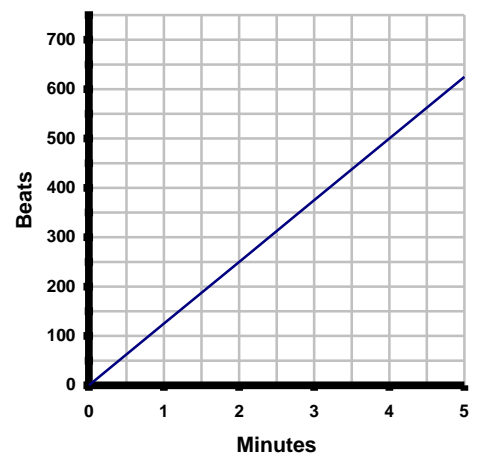
- a) (6,360) means 360 miles in 6 hours
 b) (8,480) means 8 miles in 480 hours
 c) The car represented by this graph is travelling 30 miles per hour

2)



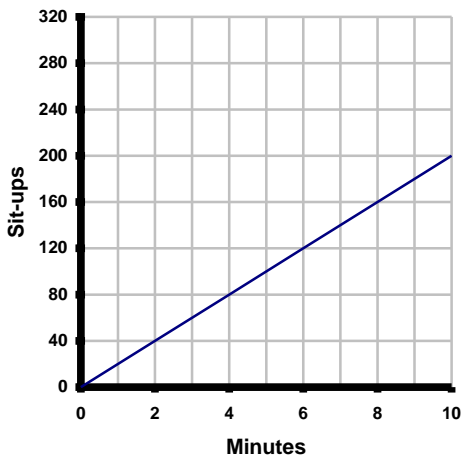
- a) (20,0) means \$20 in 0 years
 b) (0,20) means \$20 in 0 years
 c) The graph shows that it took 3 years to earn exactly \$80

3)



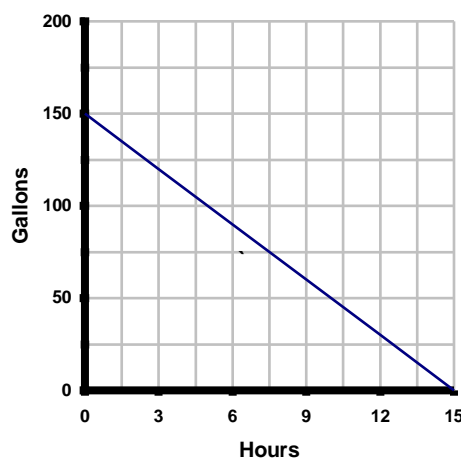
- a) (0,0) means 0 beats in 0 minutes
 b) There were 500 beats in 4 min.
 c) (1.5, 187.5) means that 187.5 beats were played in 1.5 minutes

4)



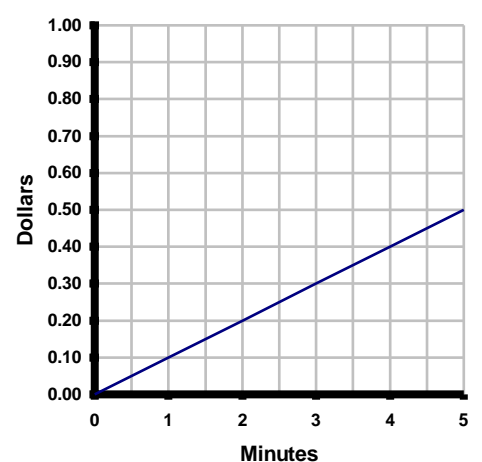
- a) (4,80) means 4 min. for 80 sit-ups
 b) (40,2) means 2 min. for 40 sit-ups
 c) This person would take 12 minutes complete 200 sit-ups

5)



- a) (0,150) means 0 gall. in 150 hours
 b) (150,0) means 150 gall. in 0 hours
 c) (15,0) means 0 gallons were left after 15 hours

6)



- a) (0,0) means \$0 in 0 seconds
 b) (2.5, .25) means 2.5 min. for \$0.25
 c) (0.5, 0.05) means that it took 30 seconds to earn a nickel