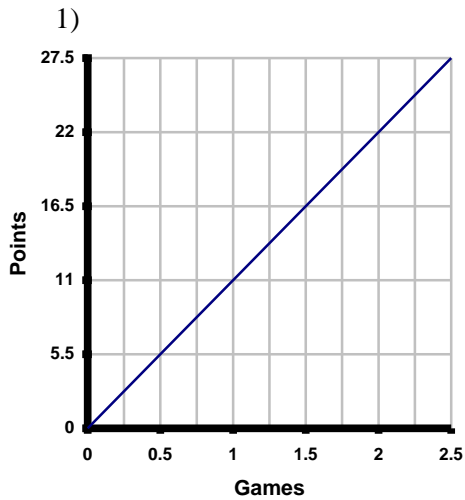
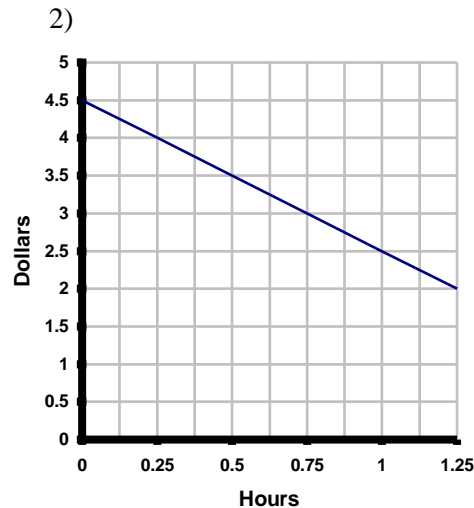


INTERPRETING GRAPHS #3

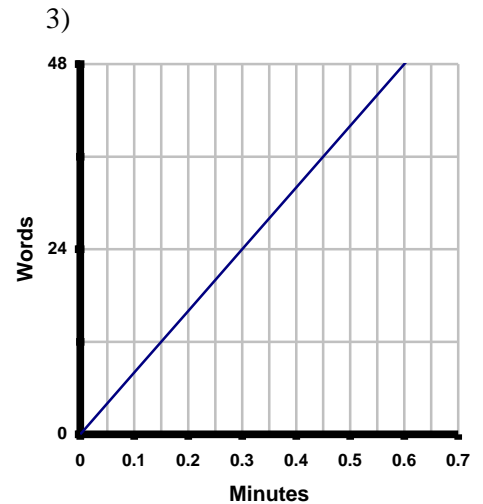
Directions: Circle the letter(s) of each correct statement. There may be more than one true statement.



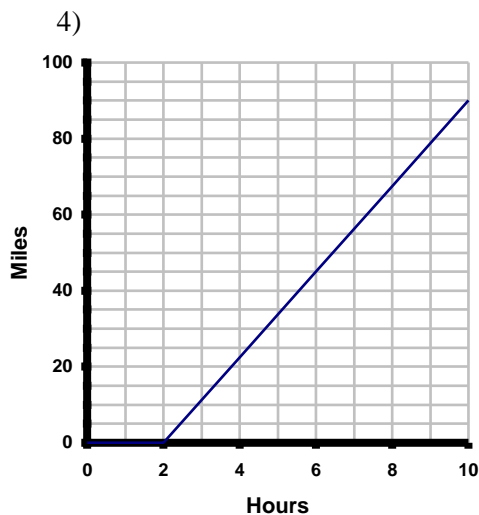
- a) $(0,0)$ means 0 points in 0 games
 b) $(1,11)$ means 11 pts. in 1 game
 c) $(0.5, 5.5)$ means that this player averaged 5.5 pts. per half-game



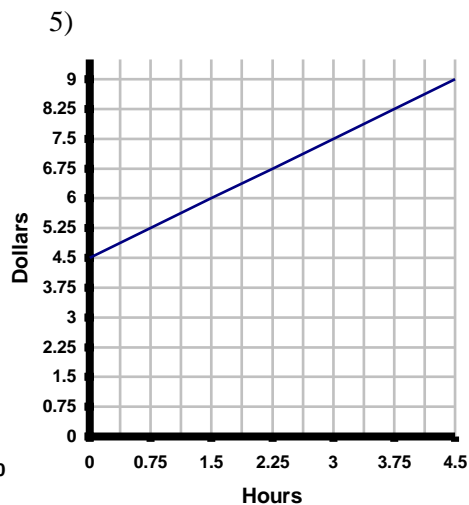
- a) $(0,4.5)$ means \$4.50 in 0 hours
 b) $(2.5,1)$ means \$2.50 in hour
 c) The graph shows that there were zero dollars at zero hours



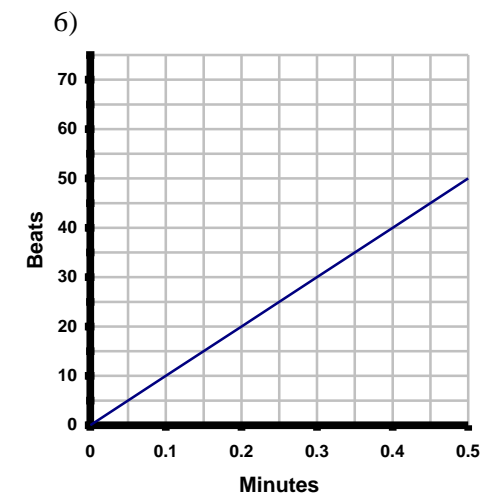
- a) 48 words were read in 0.3 min.
 b) 0.3 words were read in 48 min.
 c) $(0.15, 12)$ means it took 0.15 minutes to read 12 words



- a) 2 miles were covered in 0 hours
 b) $(0,2)$ means 0 miles in 2 hours
 c) $(2,0)$ means that zero miles were covered in two hours



- a) $(3,7.5)$ means \$3 in 7.5 hours
 b) $(4.5,9)$ means \$9 in 4.5 hours
 c) The point $(9,18)$ would appear on an extended version of the graph



- a) $(0,10)$ means 0 beats in 10 min.
 b) $(10,0.1)$ means 10 beats in 1 min.
 c) It will take this person less than 1 minute to make 70 beats